



## Headlight Kit Installation Guide Type B

### Tools Needed

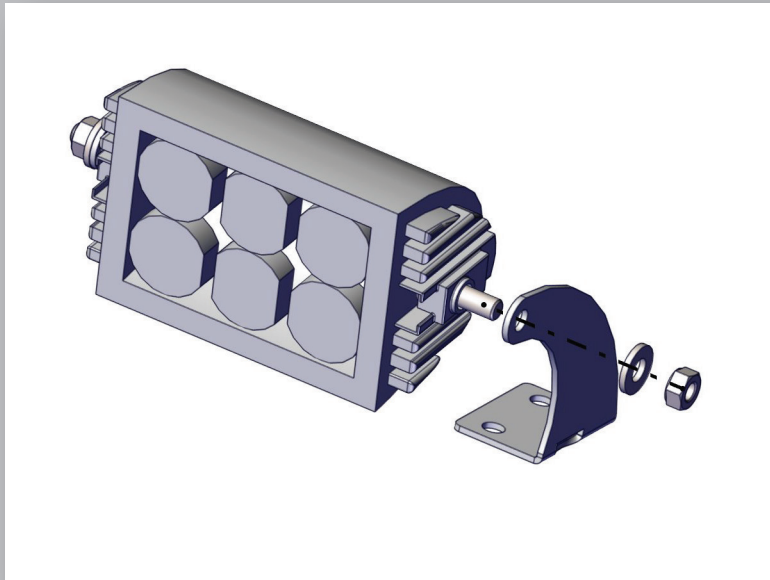
- 14mm socket or wrench
- 13mm socket or wrench
- 12mm socket or wrench
- 10mm socket and wrench
- 6mm hex key wrench
- 2.5mm hex key wrench
- Phillips screwdriver

### Light Kit Contents

- Headlight unit
- Regulator/Rectifier
- Type B Mounting Brackets
- Handlebar Switch
- Light sub-harness

Thank you for purchasing a headlight kit designed for your SSR Motorsports pit bike. To install this kit you will need the tools listed above. If you are missing any parts listed, please contact your SSR Motorsport dealer. If you have any doubt regarding any portion of the installation, it is encouraged you have this kit installed by your local SSR motorsports dealer.

1



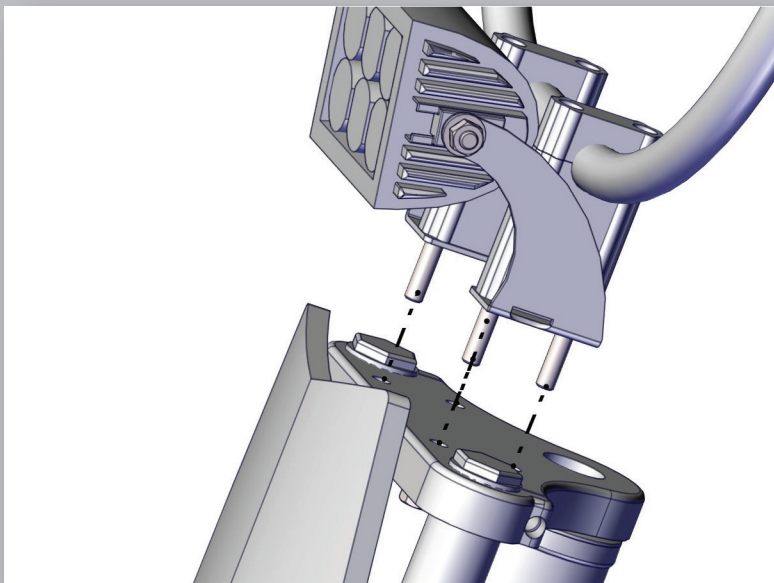
Begin first by installing the brackets onto the light with the tabs pointing inwards

2



Remove the four stem bolts carefully by turning the fork to access the bolts

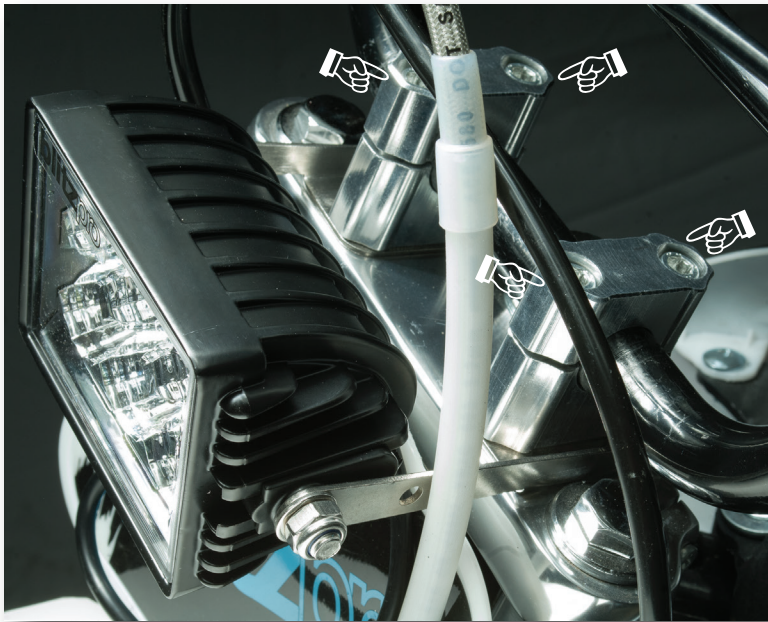
3



Install the headlight with brackets by lining it up with the four stem bolts



4



Tighten stem onto the upper crown and route all cables outside the bracket.

\*NOTE photo shows type A bracket. Type B bracket is mounted similarly and fits the new style number plates.

5



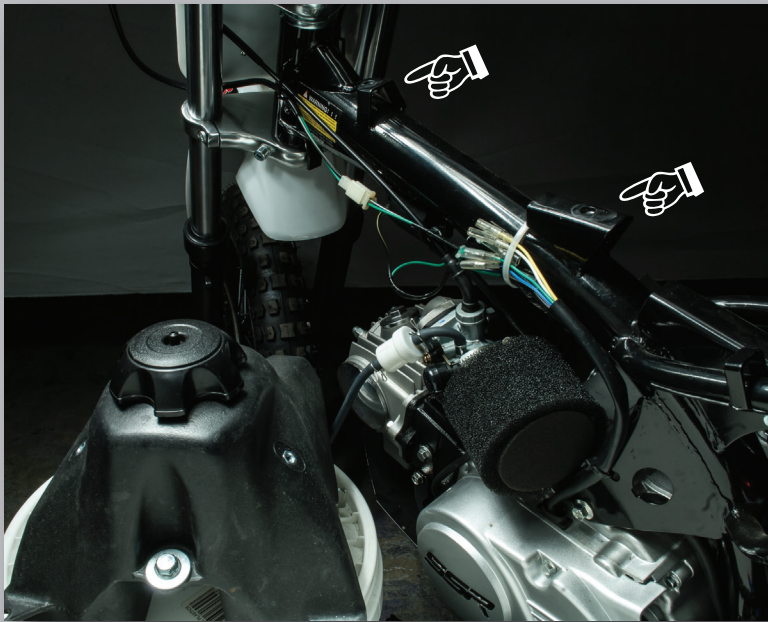
Remove four screws that hold the front of the bike's seat to the fuel tank

6



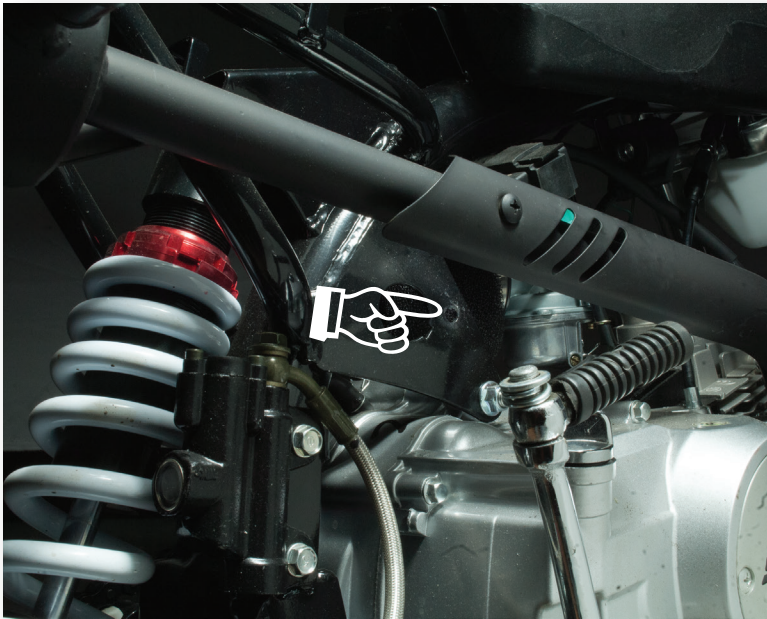
Uninstall the seat by removing the two screws underneath and slide back.

7



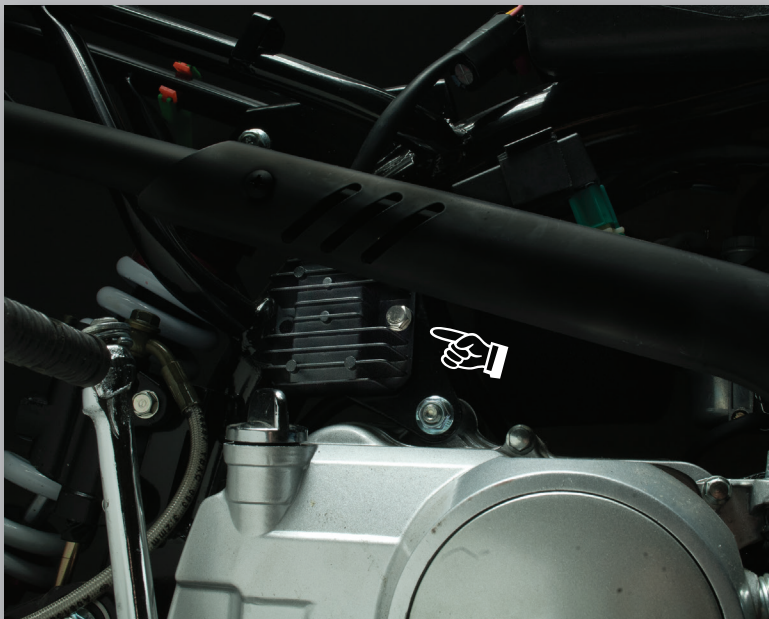
Remove the two screws holding the fuel tank. Cut ziptie to access the wires.

8



Locate mounting hole on frame behind the exhaust and above the engine.

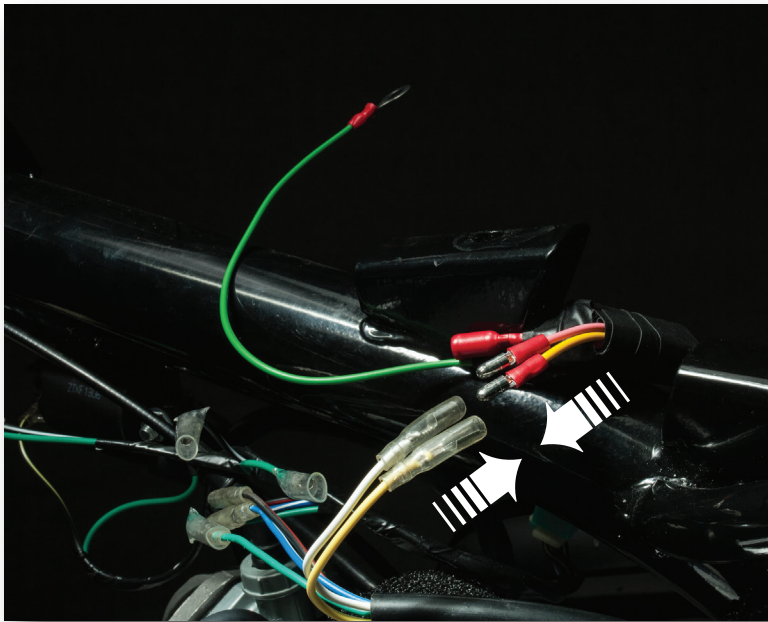
9



Install regulator/rectifier with the 10mm screw and nut supplied in the kit.



10



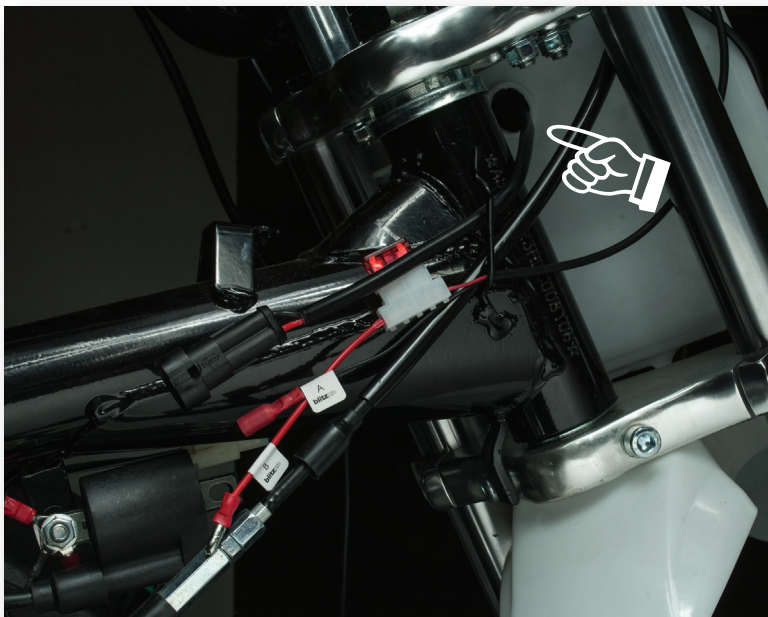
Plug the two male bullet terminals from the regulator/rectifier into the female terminals of the white and yellow wires on the chassis.

11



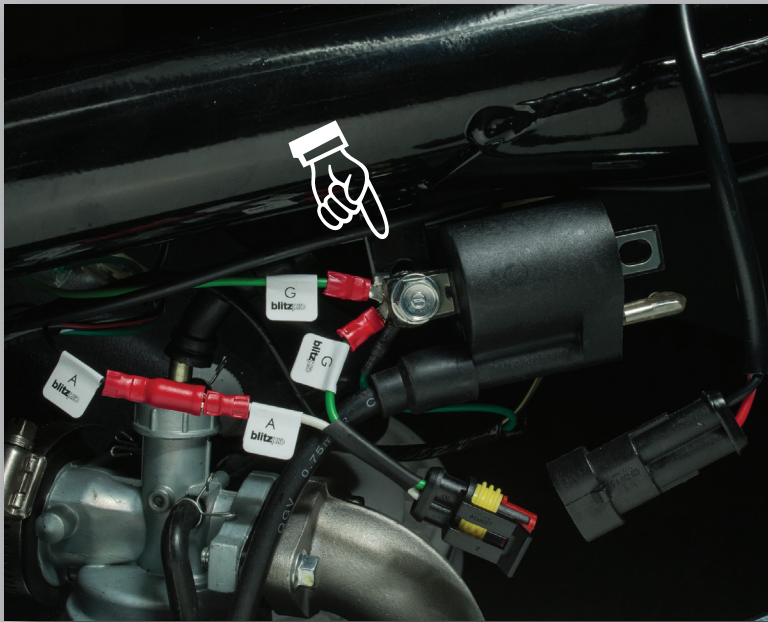
Install switch by removing throttle grip with a Phillips screw driver. Slide switch onto bar and tighten with 2.5mm hex key.

12



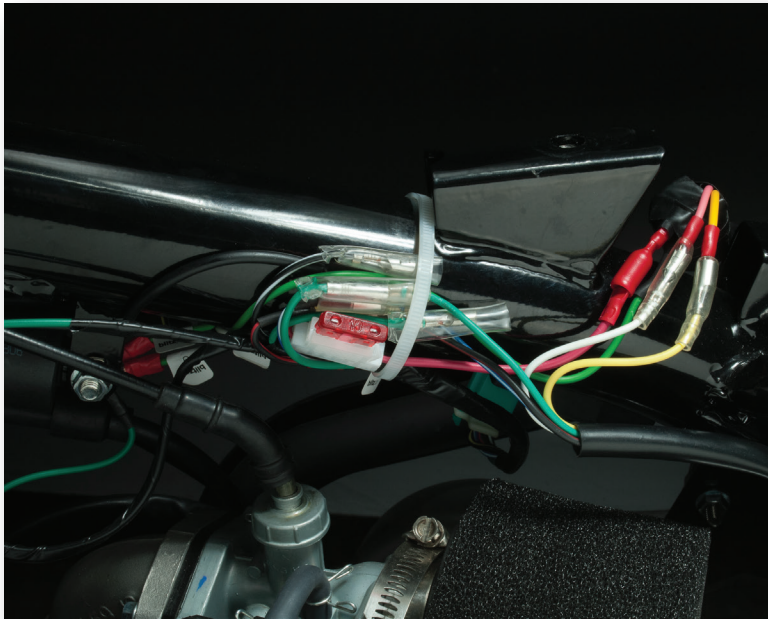
Route light plug through hole in number plate. Plug bullet labeled **B** into male bullet on regulator/rectifier harness

13



Bolt all green wires labeled **G** to the exposed metal tab located underneath the top tube. Match remaining wires labeled **A** and plug in.

14



Install new zip tie and re-bundle loose wires to the top tube. Check all wire connections with a light tug.

15



Reinstall fuel tank and seat by reversing the earlier steps. Enjoy your completed kit!